

2024

Off-Leash Recreation with Your Dog in Central Oregon



dogpac 3 Keys to Success


Access
Responsibility
Enjoyment

www.dogpac.org

dogpac.org
PO Box 2091
Bend, Oregon 97709
HappyTails@dogpac.org
Follow us




Humane Society of Central Oregon
6170 SE 27th St, Bend
hsc.o.org
541-382-3537




The Bomb Squad
Removal of Canine Landmines!
k9bomb.com | 541-617-1900
SERVING DESCHUTES COUNTY SINCE 2001



Bend's Best VETERINARY CLINIC
bendveterinaryclinic.com
541-382-0741
360 NE Quimby Ave, Bend



Thanks to our Sponsors!

About dogpac

1. Always carry a leash and poop bags. Pick up or bury your dog's poop - plus an extra if you see any.
2. Keep your dog in sight and under voice control, or on-leash. If your dog gets into a problem situation, go get him! Don't just stand there and yell.
3. If you meet on-leash dogs, dog-averse people, mountain bikers, or horses on the trail, have your dog sit and stay, or leash up while they pass by.



Etiquette Tips

Places to go OFF-LEASH in Bend

- Discovery Park**
Northwest Crossing
1 acre fenced
- Awbrey Reservoir**
NW 12th & NW Trenton,
5 acres partially fenced
- Overturf Butte**
475 NW 17th St
4 acres fenced
- Ponderosa Park**
225 SE 15th St
3 acres fenced,
small dog area
- Riverbend Park**
799 Columbia St.
1 acre fenced, river access
- Alpenglow Park**
61049 SE 15th St
4 acres fenced, small dog area,
agility equipment
- Hollinshead Park**
1235 NE Jones Rd
3 acres
partially fenced
- Big Sky Park**
21690 Neff Rd
11 acres fenced
- Bob Wenger Off-leash Area**
3750 NE Purcell
16 acres fenced, trails,
and small dog area



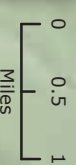
Places to go Off-Leash



Leash dogs in parking lots and near roads.

- P** Parking
- Sno-Park*
- Trail - Off-Leash Year Round
- Trail - Off-Leash May 1 to Oct. 31
- Trail - Leash Requirements July 15 - Sept. 15 (snowbound until July)
- Trail - Leash Requirements May 15 - Sept. 15
- Trail at Rimrock (aka GoodDog!) off-leash year-round
- Dirt Roads (Low Vehicle Traffic)
- Dog Access to Stream
- Poop bags and trash cans provided by dogpac

*Wanoga is a groomed trail with available poop bags. Skyliner and Edison are ungroomed with unpredictable snow depth (check conditions and bring your own poop bags).



DONATE

Our trail creation and maintenance, poop bags and disposal cans, and this brochure are funded by your donations. Please Donate at www.dogpac.org or on-site donation boxes.



There are no leash restrictions in the Phil's Trail area, but the trails are popular. Be courteous, move your dogs off the trail when encountering others, and avoid weekends and other peak periods.

Hiking Trails

The Rimrock area of the Deschutes National Forest (aka GoodDog!), off of Century Drive between LOGE Bend and Widgi Creek, provides year-round off-leash trails and river access. dogpac volunteers help maintain the trails, and provide poop bags and disposal cans – please use them!

The Deschutes River Trail and Three Sisters Wilderness trails provide great off-leash opportunities in the periods between winter snow and summer leash-restrictions. River Trail restrictions apply between Meadow Camp and Benham Falls East from May 15 to September 15. Dogs are allowed off-leash year-round while in the river. Wilderness restrictions apply between the South Sister Climber's Trail and Broken Top from July 15 to September 15.

Mt. Bachelor Off-Leash Area provides a place for visitors to exercise their dogs.

Edison Sno-Park **Sunriver**
Bennington Dog Park

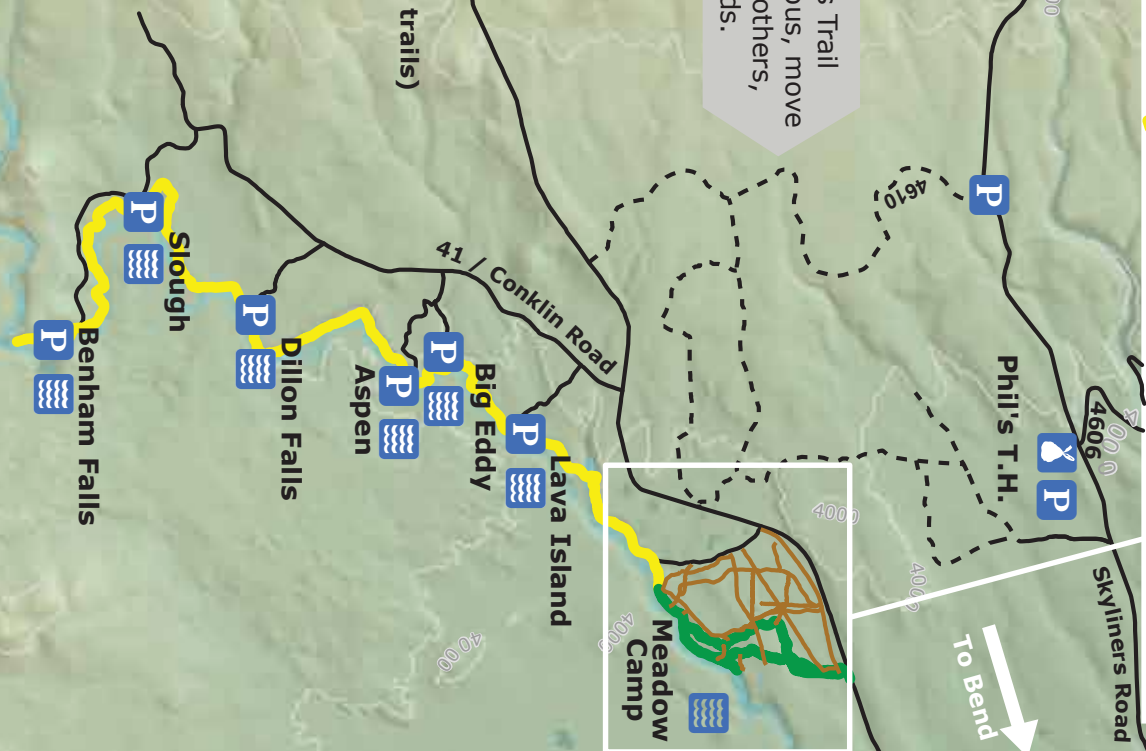
- Swampy Lakes T.H.** (No dogs Nov 1 to May 1)
- Virginia Meissner T.H.** (No dogs Nov 1 to May 1)
- Wanoga Sno-Park** (dog-friendly ski/snowshoe trails)
- Kapka Butte Sno-Park** (access to snowmobile trails)

Wanoga Ski and Snowshoe Trails

Wanoga Sno-Park offers the only dog-friendly xc ski and snowshoe trails in Oregon. dogpac volunteers created, maintain, and groom the trails. A trail map is available at the trailhead and at www.dogpac.org. Poop bags and disposal cans are provided by dogpac – please use them!

More ski and snowshoe trails

Edison and Skyliner Sno-Parks also offer dog-friendly xc ski and snowshoe trails. No poop bags are available, so please bring your own.



Disclaimer: This Map including but not limited to the depictions, pictures, representations and information contained herein ("Map"), is intended for informational purposes only, nor is it intended to be relied on in any way whatsoever. The Map should not be considered complete, up-to-date, and it is not intended to be used in place of a visit, consultation, or advice of any professional or investigation with the appropriate state or federal agency. The Map is provided "as is" without warranty of any kind. DogPAC does not make any warranty whatsoever as to the accuracy or completeness of the Map and DogPAC will not be responsible for any claims attributable to errors, omissions, or other inaccuracies in the information contained herein. The entire risk for the results and performance of the Map is assumed by you, the user.